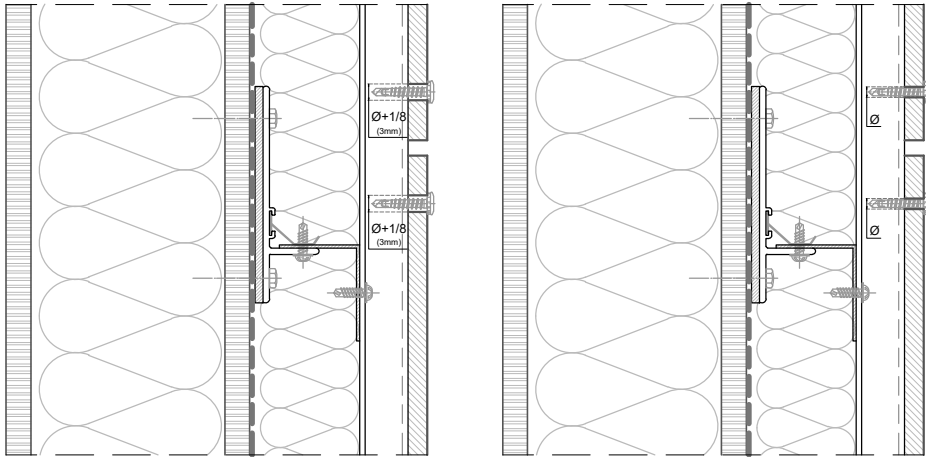


Measurements in inches are approximated. Real measurements in mm.
The updated version of this present installation detail can be found on the PARKLEX PRODEMA web.
Panel sizes and maximum distances in technical catalogue.

DO NOT OVERTIGHTEN THE SCREW!

Torque recommendations for SX3 screw:

5Nm to fasten the panel on a 7/64" thick aluminum channel



Floating point

Fixed point

FIXING DETAIL

MEASURES: INCH

A-A' FAÇADE BASE	H-H' INSIDE CORNER (OPEN JOINT)
B-B' PARAPET CAP	I-I' OUTSIDE CORNER (OPEN JOINT)
C-C' HORIZONTAL JOINT	J-J' DOOR HEAD
D-D' VERTICAL JOINT	K-K' DOOR JAMB
E-E' WINDOW SILL	L-L' VENTILATION DROPPED CEILING
F-F' WINDOW JAMB	M-M' SIDE VENTILATION DROPPED CEILING
G-G' WINDOW HEAD	

PARKLEX PRODEMA www.parklexprodema.com	PRODUCT GRCLAD	SYSTEM EXPOSED SCREW FIXING ON ALUMINIUM NFPA 285	DRAWN BY Mikel Maritxalar	DATE 02/2024
	PLAN# GRC1-01-C-G.P.	TITLE GENERAL PERSPECTIVE	APPROVED BY Maialen Irastorza	PAGE 1 / 21